



EF 4.121

SINGLE FILTER

DESCRIPTION

Single Filter

MATERIALS

Housing: AlMg4.5Mn (alternatively St or VA)
Filter hood: GK-AlSi12 (Cu) (alternatively St or VA)
Filter element: separate data sheet (FE B)
Differential pressure gauge: separate data sheet DP 5.02
Seals: NBR Nitrile (FKM Fluor elastomer - on request)
Special materials on request

PRESSURE

Max. working: 1,6 MPa (16 bar)
Collapse differential pressure of the filter element from 6 to 30 bar, depending on the diameter.

BYPASS VALVE

Not available

FLOW RATE

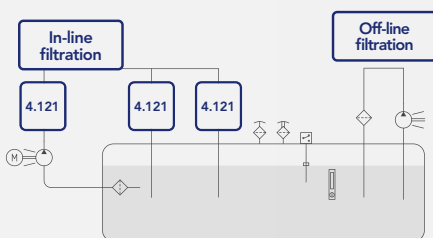
Flow rate up to 1000 l/min

WORKING TEMPERATURE

From -10° to +120°C



HYDRAULIC DIAGRAM



Is this datasheet the latest release? Please check on our website.

EF 4.121

SINGLE FILTER

ORDERING AND OPTION CHART

Type code (ordering example) - The type code is found on the element head.

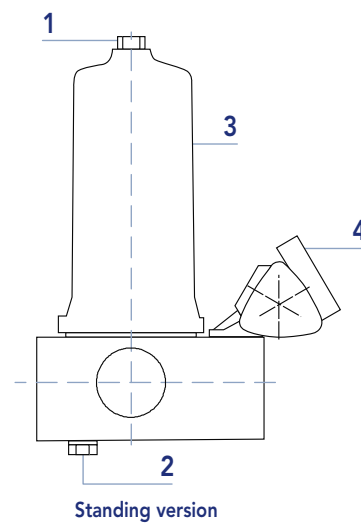
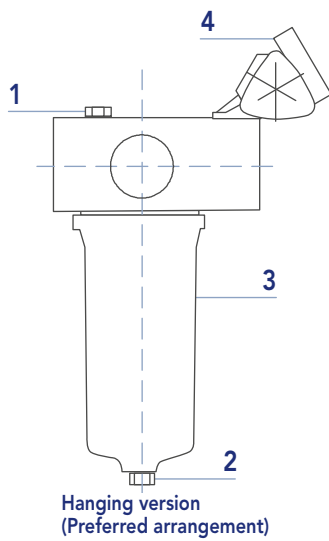
EF 4.121	50	060	L2	V	H	L	5.02 - 2,0
							deltaP® Differential pressure gauge
							5.02-2,0
							The filters are fitted standard with a deltaP® differential pressure gauge Type 5.02 (see separate data sheet for the designation). Other deltaP® types on request
							Through-flow direction
							L Left to right (standard)
							R Right to left
							Installation arrangement
							H Hanging type (standard)
							S Standing type
							Sealing material
							P NBR (standard)
							V FPM
							Other materials on request
							Installation arrangement
							L1 Standard overall length only DN20 (cast Al filter housing)
							L2 Standard overall length (cast Al filter housings)
							Other overall lengths on request (welded filter housings)
							Filter fineness/medium
							005 optimesh® wire mesh 5µm nominal, 10µm absolute
							010 optimesh® wire mesh 10µm nominal, 25µm absolute
							015 optimesh® wire mesh 15µm nominal, 34µm absolute
							020 optimesh® wire mesh 20µm nominal, 40µm absolute
							025 optimesh® wire mesh 25µm nominal, 60µm absolute
							040 optimesh® wire mesh 40µm nominal, 80µm absolute
							060 optimesh® wire mesh 60µm nominal, 100µm absolute
							080 precimesh® wire mesh 80µm nominal, 150µm absolute
							100 precimesh® wire mesh 100µm nominal, 200µm absolute
							120 precimesh® wire mesh 120µm nominal, 250µm absolute
							150 precimesh® wire mesh 150µm nominal, 300µm absolute
							xxx Paper, glass fibre paper
							Nominal connection width/size DN [mm]
							20 / 32 / 50 / 80
							Type series
							EF 4.121 fluidtech® single filter Type 4.121

EF 4.121

SINGLE FILTER

INSTALLATION DRAWING

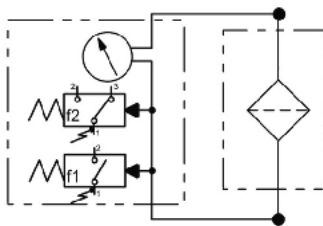
Mounting the differential pressure gauge



Legend:

- 1: Bleed screw
- 2: Drain plug
- 3: Filter housing
- 4: Differential pressure gauge

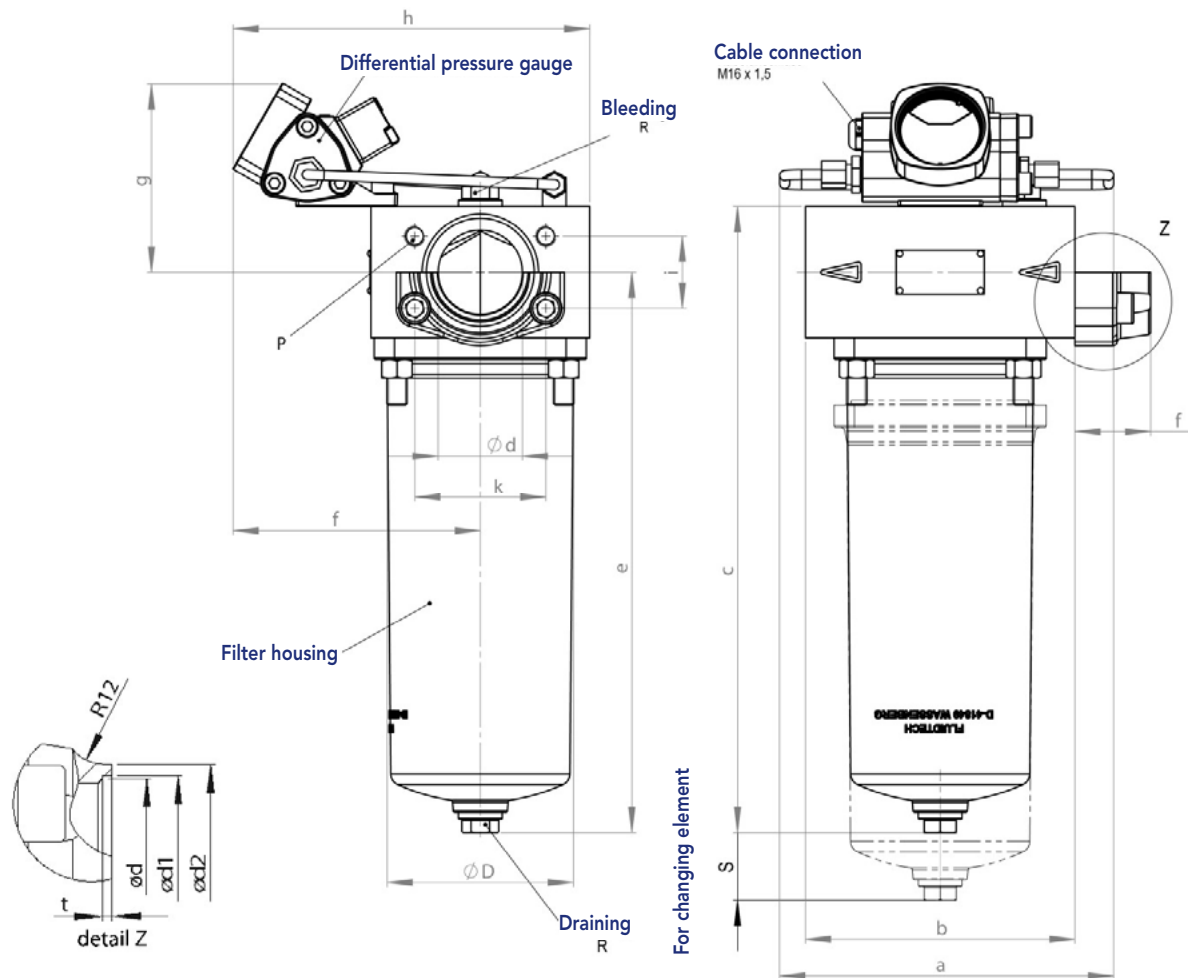
SCHEMATIC DIAGRAM



EF 4.121

SINGLE FILTER

DIMENSIONS



CONNECTIONS AND FLANGE CONNECTION SIZES

DN	ϕd	k	l	d	f	d1	d2	t	Remarks
20	G 3/4	-	-	G3/4	-	-	-	-	Female thread in housing
32	G 1 1/4	-	-	G1 1/4	-	-	-	-	Female thread in housing
50	-	77.9	42,8	G2	36	61	74	3	Universal flange for screwing or welding
80	-	106.4	62	-	41	81	89	-	Weld-on flange

EF 4.121

SINGLE FILTER

FILTER DIMENSIONS

DN	Overall length key	a	b	c	e	f	g	h	øD	R	S _≈ [standing]	S _≈ [hanging]	P	Weight excl. filter elements/differential pressure gauge [kg]
20	L1	175	90	125	104	126	93	180	65	G 1/4	69	30	-	2
32	L2	165	115	260	232	136	101	200	86	G 3/8	169	40	-	6
50	L2	200	160	370	333	147	112	220	110	G 1/2	250	40	M12 x 16	7
80	L2	200	180	495	447	170	128	260	158	G 3/4	329	70	M16 x 18	15

Dimensions in mm

DESIGN DATA

The filter unit has been designed, built and tested in accordance with the European Pressure Equipment Directive 2014/68/EU and the German Equipment Safety Act.

DN	Overall length key	Smallest flow cross-section [mm]	Total volume [dm ³]
20	L1	ø 21	0.25
32	L2	ø 32	0.90
50	L2	ø 42	2.30
80	L2	ø 70	6.50